

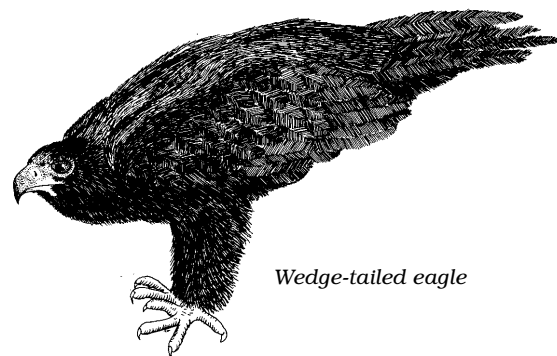
GORDON RIVER TOUR OPERATORS

Bird List for Macquarie Harbour and Lower Gordon River

Family Anatidae

Black swan
 Australian shelduck
 Maned duck
 Grey teal
 Chestnut teal
 Pacific black duck
 Musk duck

Cygnus atratus
Tadorna tadornoides
Chenonetta jubata
Anas gracilis
Anas castanea
Anas superciliosa
Biziura lobata



Wedge-tailed eagle

Family Podicipedidae

Hoary-headed grebe

Poliiocephalus poliocephalus

migratory

Family Spheniscidae

Little penguin

Eudyptula minor

Family Procellariidae

Fairy prion
 Short-tailed shearwater

Pachyptila turtur
Puffinus tenuirostris

at sea

Family Pelecanoididae

Common diving-petrel

Pelecanoides urinatrix

at sea

Family Diomedeidae

Black-browed albatross
 Shy albatross

Diomedea melanophrys
Diomedea cauta

at sea

at sea

Family Sulidae

Australasian gannet

Morus serrator

at sea

Family Phalacrocoracidae

Little pied cormorant
 Great cormorant
 Black-faced shag

Phalacrocorax melanoleucos
Phalacrocorax carbo
Leucocarbo fuscescens

Family Ardeidae

White-faced heron
 Great egret
 Cattle egret

Ardea novaehollandiae
Ardea alba
Ardea ibis

migratory

migratory

Family Accipitridae

White-breasted sea eagle
 Wedge-tailed eagle
 Swamp harrier
 Grey goshawk

Haliaeetus leucogaster
Aquila audax
Circus approximans
Accipiter novaehollandiae
Accipiter fasciatus

K

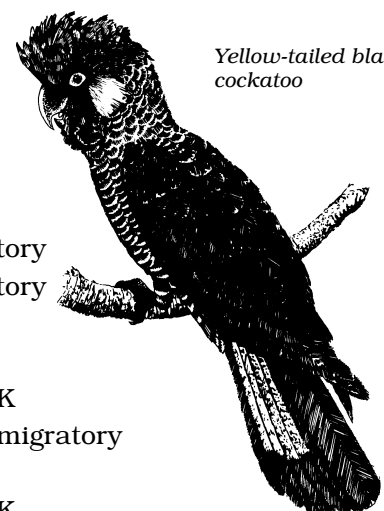
migratory

K

Family Falconidae

Brown falcon

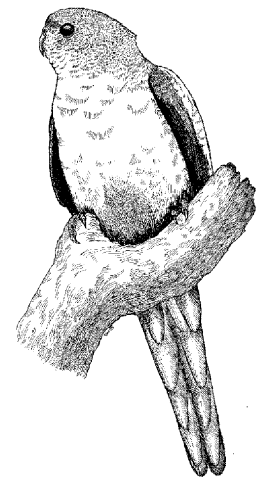
Falco berigora



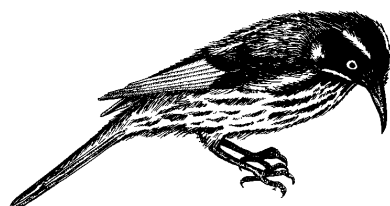
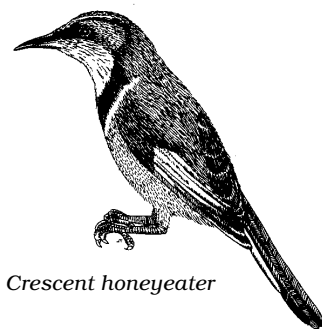
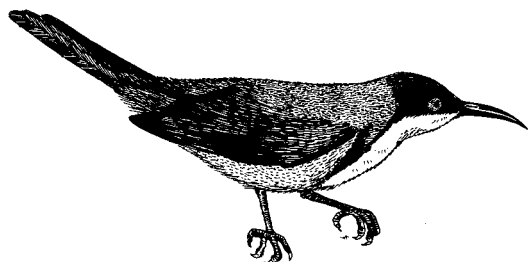
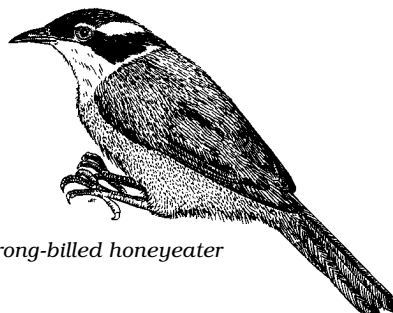
Yellow-tailed black cockatoo

Family PhasianidaeBrown Quail *Coturnix australis***Family Rallidae**Lewins rail *Rallus pectoralis*Tasmanian native hen *Gallinula mortierii* endemicEurasian coot *Fulica atra***Family Scolopacidae**Latham's snipe *Gallinago hardwickii* migratoryRuddy turnstone *Arenaria interpres* migratorySanderling *Calidris alba* migratoryRed-necked stint *Calidris ruficollis* migratoryCurlew sandpiper *Calidris ferruginea* migratory**Family Haematopodidae**Pied oystercatcher *Haematopus longirostris*Sooty oystercatcher *Harmatopus fuliginosus***Family Charadriidae**Red-capped plover *Charadrius ruficapillus*Double-banded plover *Charadrius bicinctus* migratoryHooded plover *Charadrius cucullatus*Masked lapwing *Vanellus miles***Family Stercorariidae**Arctic jaeger *Stercorarius parasiticus* migratory**Family Laridae**Pacific gull *Larus pacificus*Silver gull *Larus novaehollandiae*Caspian tern *Hydropogone caspia*Crested tern *Sterna bergii*Fairy tern *Sterna nereis***Family Columbidae**Brush bronzewing *Phaps elegans***Family Cacatuidae**Yellow-tailed black cockatoo *Calyptorhynchus funereus*Sulphur-crested cockatoo *Cacatua galerita***Family Platycercidae**Swift parrot *Lathamus discolor* migratory endemic breederGreen rosella *Platycercus caledonicus* endemicGround parrot *Pezoporus wallicus* VBlue-winged parrot *Neophema chrysostoma* migratoryOrange-bellied parrot *Neophema chrysogaster* E migratory endemic breeder**Family Cuculidae**Fan-tailed cuckoo *Cuculus flabelliformis* migratoryHorsfield's bronze-cuckoo *Chrysococcyx basalis* migratory**Family Strigidae**Southern boobook *Ninox novaehollandiae***Family Podargidae**Tawny frogmouth *Podargus strigoides***Family Aegothelidae**Australian owllet-nightjar *Aegotheles cristatus* K**Family Apodidae**White-throated needletail *Hirundapus caudacutus* migratory

Orange-bellied parrot



Family Alcedinidae		
Azure kingfisher	<i>Alcedo azurea</i>	K
Family Pardalotidae		
Spotted pardalote	<i>Pardalotus punctatus</i>	
Striated pardalote	<i>Pardalotus striatus</i>	migratory
Family Acanthizidae		
White-browed scrubwren	<i>Sericornis frontalis</i>	
Scrubtit	<i>Sericornis magnus</i>	endemic
Striated fieldwren	<i>Sericornis fuliginosus</i>	
Brown thornbill	<i>Acanthiza pusilla</i>	
Tasmanian thornbill	<i>Acanthiza ewingii</i>	endemic
Family Epthianuridae		
White-fronted chat	<i>Epthianura albifrons</i>	
Family Meliphagidae		
Yellow wattlebird	<i>Anthochaera paradoxa</i>	endemic
Yellow-throated honeyeater	<i>Lichenostomus flavicollis</i>	endemic
Strong-billed honeyeater	<i>Melithreptus validirostris</i>	endemic
Black-headed honeyeater	<i>Melithreptus affinus</i>	endemic
Crescent honeyeater	<i>Phylidonyris pyrrhoptera</i>	
New Holland honeyeater	<i>Phylidonyris novaehollandiae</i>	
Tawny-crowned honeyeater	<i>Phylidonyris melanops</i>	
Eastern spinebill	<i>Acanthorhynchus tenuirostris</i>	
Family Muscicapidae		
Pink robin	<i>Petroica rodinogaster</i>	
Flame robin	<i>Petroica phoenicea</i>	migratory
Scarlet robin	<i>Petroica multicolor</i>	
Dusky robin	<i>Melanodryas vittata</i>	endemic
Olive whistler	<i>Pachycephala olivacea</i>	
Golden whistler	<i>Pachycephala pectoralis</i>	
Grey shrike-thrush	<i>Colluricincla harmonica</i>	
Grey fantail	<i>Rhipidura fuliginosa</i>	migratory
Whites thrush	<i>Zoothera dauma</i>	
Blackbird	<i>Turdus merula</i>	introduced
Family Maluridae		
Superb fairy-wren	<i>Malurus cyaneus</i>	
Southern emu-wren	<i>Stipiturus malachurus</i>	
Family Campephagidae		
Black-faced cuckoo-shrike	<i>Coracina novaehollandiae</i>	migratory
Family Artamidae		
Dusky woodswallow	<i>Artamus cyanopterus</i>	migratory
Family Cracticidae		
Black currawong	<i>Strepera fuliginosa</i>	endemic
Family Corvidae		
Forest raven	<i>Corvus tasmanicus</i>	
Family Alaudidae		
Common skylark	<i>Alauda arvensis</i>	introduced

Family MotacillidaeRichards pipit *Anthus novaeseelandiae***Family Passeridae**House sparrow *Passer domesticus* introduced**Family Ploceidae**Beautiful firetail *Stagonopleura bella***Family Fringillidae**European greenfinch *Carduelis chloris* introducedEuropean goldfinch *Carduelis carduelis* introduced**Family Hirundinidae**Welcome swallow *Hirundo neoxena* migratoryTree martin *Cercopis nigricans* migratory**Family Zosteropidae**Silvereye *Zosterops lateralis* migratory**Family Sturnidae**Common starling *Sturnus vulgaris* introduced**Explanation of Symbols***E – Endangered.* In danger of extinction and whose survival is unlikely if the casual factors continue operating.*V – Vulnerable.* Believed likely to become endangered in the near future if the causal factors continue operating.*K – Insufficiently Known.* Suspected of belonging to one of the above categories, but not definitely known because of lack of information.*Endemic.* Wild populations of the species live only in Tasmania.*Introduced.* Introduced by humans from outside Tasmania or Australia*Migratory.* Migrates to and from Tasmania on an annual basis, or from a specific region within the state to another.*At sea.* Unlikely to be seen on land as the bird spends the greater part of its time at sea.*New Holland honeyeater**Crescent honeyeater**Eastern spinebill**Strong-billed honeyeater*