



# Freycinet National Park

On Tasmania's mild East Coast is the rugged and beautiful Freycinet Peninsula. The Freycinet National Park, reserved in 1916, consists of granite mountains, surrounded by bays and white sandy beaches. The mountains create a spectacular sight from numerous vantage points along the East Coast.

## Highlights

The scenic grandeur of Freycinet has long been admired, with the size and barren composition of the granite peaks of the Hazards rising from the low lying coastal vegetation. Freycinet National Park offers a range of opportunities to experience the Tasmanian coastal environment. Wildflowers, birds and native animals can be seen, along with various marine creatures.

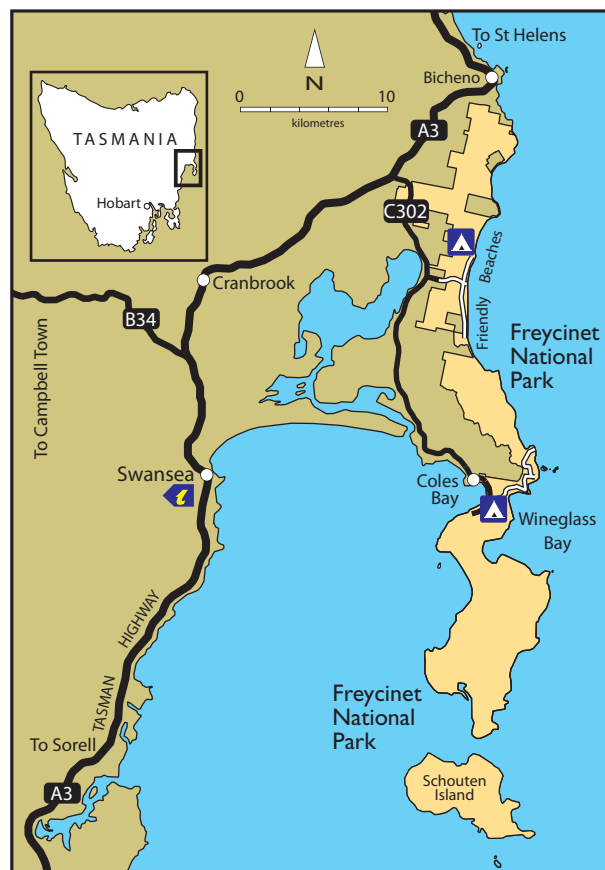
## Getting there

The park is 2.5 to 3 hours drive from either Hobart (194 km) or Launceston (173 km). From Hobart take the Tasman Highway (A3) to Sorell and continue up the East Coast. From Launceston take the Midland Highway (Route 1) to Campbell Town then turn onto the B34 toward Lake Leake, continuing on until it reaches the A3. Follow the A3 northward. About 12 km from Bicheno turn onto the Coles Bay Road (C302). After about 9 km there is a turnoff to the Friendly Beaches part of the park. About 2 km along the unsealed road, take a left turn and travel another 2.5 km to reach the camping area.

To reach the main part of the park continue on the C302 for another 18 km to Coles Bay township. Just beyond the entrance to the park call into the Freycinet Visitor Centre.

When driving at night please remember you are sharing the road with wildlife.

**National Parks fees apply.** Parks passes are available from Service Tasmania Shops statewide (Mon-Fri: 9am-5pm), or from the Freycinet Visitor Centre located within the Freycinet National Park.



## Things to do

There are many things you can do within this coastal park. Take a walk and enjoy the spectacular coastal scenery or try kayaking, sailing, snorkelling, scuba diving or rock climbing. A scenic drive to **Cape Tourville** provides views sweeping out across the Tasman Sea.

**Moulting Lagoon Game Reserve** is a wetland of international importance due to the numbers and species of birds that frequent the area.

**Friendly Beaches** hosts spectacular views, kilometres of unspoiled white sandy beaches and clear water. Some walks are outlined briefly below, for further details of the activity call into the visitor centre or refer to *Freycinet National Park Map and Notes* or [www.parks.tas.gov.au](http://www.parks.tas.gov.au).

Destination	Time (hours)
<b>Short Walks</b>	
Wineglass Bay Lookout	1 to 2.5
Cape Tourville	20 mins return
Sleepy Bay	10 mins return
Little Gravely Beach	30 mins return
Saltwater Lagoon/Friendly Beaches	40 mins return
Lookout Friendly Beaches	5 mins return
Great Oyster Bay	10 mins return
<b>Half day walks</b>	
Wineglass Bay	2.5 - 4 hours return
Mt Amos	3 hours return
Hazards Beach	5-6 hours return
Wineglass Bay/Hazards Beach Circuit	5 hours return

## Short walks

**Longer Walks:** Some of the short walks can be linked together to form extended walks. Refer to Freycinet National Park Map & Notes.

## Facilities

### Day visitor facilities:

The Freycinet Visitor Centre and park shop sells park passes and souvenirs. Close by, the town of Coles Bay has fuel, food and accommodation. Electric barbecues, picnic tables, water and toilets are located at Honeymoon Bay and Ranger Creek. **Drinking water** is scarce during summer, and we ask that you use water wisely and do not wash cars or boats. Water can be collected at the beginning of the Wineglass Bay walk, outside the toilet facilities.

## Car camping

Note: *camping is extremely popular over the Christmas/New Year holiday period and is decided by a ballot system drawn on 1 August. It is also very popular over Easter. Applications must be made by letter/fax/e-mail.*

It is advisable to telephone the visitor centre and book a site at other times of the year. The park offers a variety of basic powered and unpowered campsites. Call into the visitor centre for availability and payment. Further information can be found on the website at [www.parks.tas.gov.au](http://www.parks.tas.gov.au) or by calling Freycinet Visitor Centre (03) 6256 7000. Please note that there are no laundry facilities and only cold water showers near some campsites.

Internet: [www.parks.tas.gov.au](http://www.parks.tas.gov.au)

Department of Environment, Parks, Heritage and the Arts

To protect the environment camping is limited within the barriers on allocated sites. In the fragile sand dune area, camping is restricted to tents only, with one car per site. No caravans, campervans or minibuses are permitted in the sand dune area. Excess cars (other than the one allowed per site) must be parked in the overflow carparks located amongst the dune sites or in the carpark at Ranger Creek.

**Overnight walks:** Small camp sites can be found at Wineglass Bay, Cooks Beach and Hazards Beach. The park is a **fuel stove only** area and the availability and reliability of water should be checked with the ranger before departing. **Water** is normally available in water tanks at Cooks Beach and in Jimmy's Creek between Mt Graham and Cooks Beach. Less reliable sources can also be found in Lagunta Creek at Hazards Beach and where the track crosses the top of Grahams Creek. There is no water at Wineglass Bay or Bryans Beach.

## What to bring

Plenty of water, sun protection (including hat, sunscreen, sunglasses, insect repellent, ), sturdy walking boots, warm clothing and water proof jacket. If venturing overnight, a track map, compass, water, tent and fuel stove are essential.

## Weather

The weather in Tasmania can be incredibly varied, always check with the Bureau of Meteorology before going boating or walking; phone 1196 or visit the website: [www.bom.gov.au](http://www.bom.gov.au).

## Important

Freycinet National Park is a **fuel stove only** area. Due to the dry coastal vegetation it is very susceptible to fire. On days of Total Fire Ban, no naked flames (including gas and fuel stoves) are allowed in the open and walking tracks may be closed. Electric barbecues are provided at Ranger Creek and Honeymoon Bay picnic areas and can be used for cooking on these days.

## Further information

*Freycinet Map & Notes 2008; Tasmap 1:25,000 series,*

