

**Figure 5**  
**Changes in boundary, land tenure and conservation status**  
**since listing as a World Heritage Area**

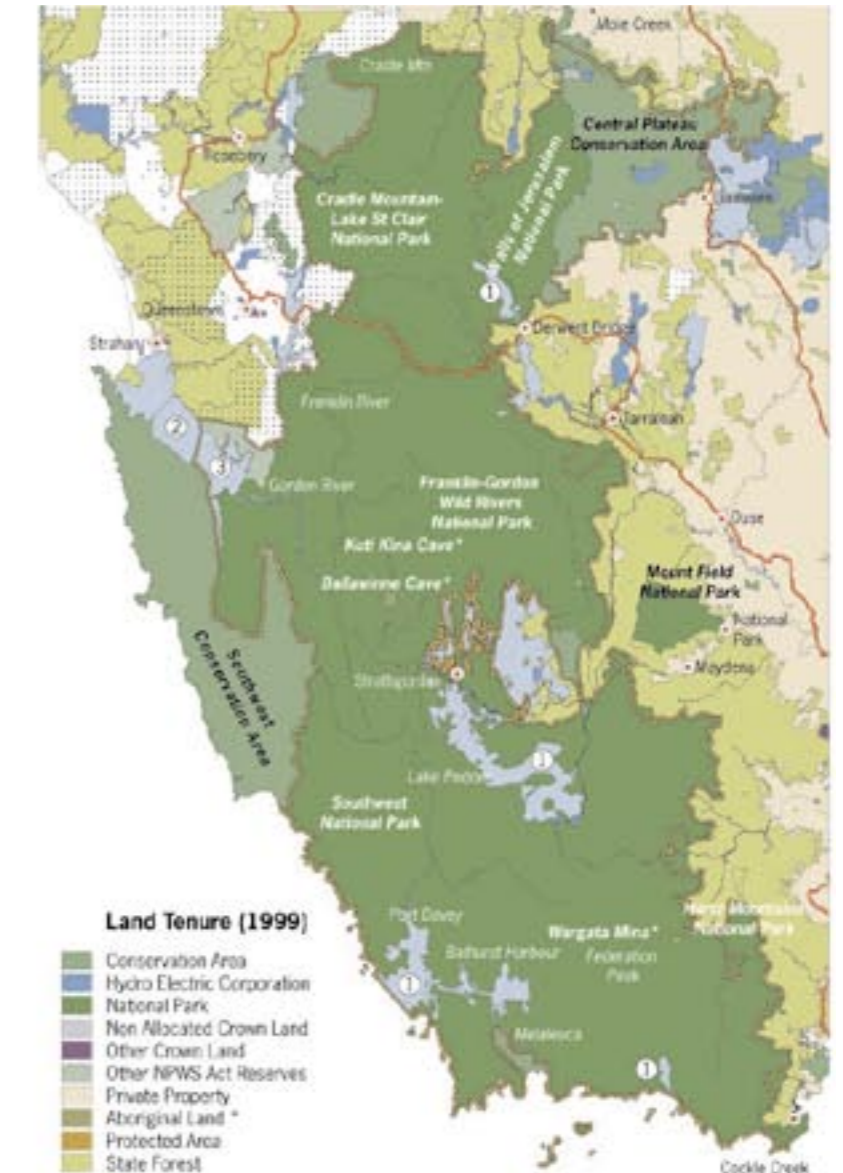
**1 Status at Listing (1982)**



**2 Status at Extension (1989)**



**3 Status at 1999**



In 1982, the three National Parks of Cradle Mountain–Lake St Clair, Franklin–Lower Gordon Wild Rivers, and Southwest were inscribed on the World Heritage List. In 1989, a large additional area mostly along the eastern boundary was accepted as World Heritage Area. This additional area consisted of, in the northeastern region, the Walls of Jerusalem National Park and the Central Plateau Conservation Area; in the central region, the enlarged Franklin–Gordon Wild Rivers National Park (which extended both westwards around the Gordon River and eastwards over former Conservation Area); and, in the southeastern region, the enlarged Southwest National Park (which extended over former State Forest). Some of these areas retained dual status for a period. The extent of areas vested in the Hydro Electric Corporation also reduced, especially in the Gordon River and Strathgordon districts. In 1997, the Commonwealth–State Regional Forest Agreement resulted in some areas of State Forest and other public land adjacent to the TWWHA being approved for inclusion in national parks or other conservation reserves. These reserves have since been proclaimed.



Tasmanian Wilderness  
 World Heritage Area Boundary

Proposed RFA Reserves  
 (approved in the Regional Forest Agreement 1997  
 but yet to be proclaimed)\*\*  
 \*\* (2003) All areas have now been proclaimed.

- ① Water body is included in National Park
- ② Water body is included in Conservation Area
- ③ Water body is included in Historic Site